

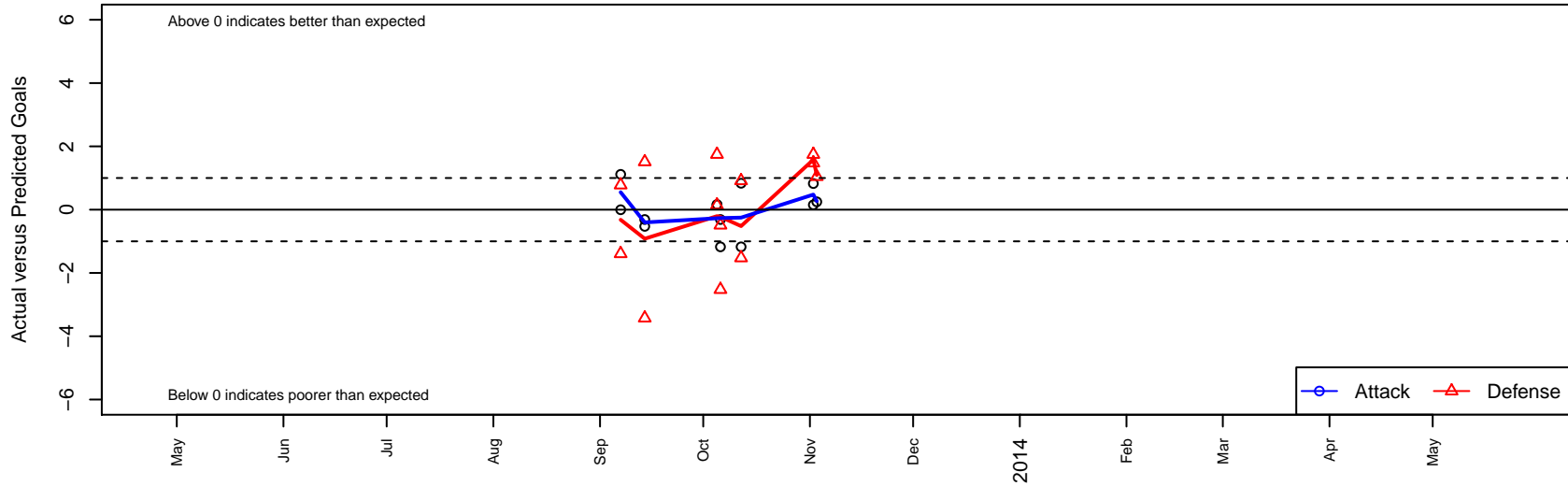
PVSC United Adrenaline G99

, ID
 G99 total strength=932
 attack=2.27 defense=1.1
 fall league = Idaho D3 Division 1 U14
 notes= White
 alt names used:
 PVSC UNITED ADRENALINE
 PVSC UNITED ADRENALINE WHITE (ID)
 PVSC ADRENALINE WHITE (ID) [G99]

Venues played:
 Idaho D3 Division 1 U14
 GEM State Challenge U14G Gold U14
 FC Nova Fall Showcase U13/U14G King U14



PVSC United Adrenaline G99
 Dots are actual minus expected GF (blue circles) and GA (red triangles).
 Blue line is smoothed change in attack strength. Red is smoothed change in defense strength.



	date	home		away		venue	pred.home	pred.away
15158	2013-11-03	Impact United G99	2	PVSC United Adrenaline G99	1	FC Nova Fall Showcase U13/U14G King U14	3.0	0.75
15039	2013-11-02	FC Nova Pink G00	2	PVSC United Adrenaline G99	1	FC Nova Fall Showcase U13/U14G King U14	3.7	0.85
15041	2013-11-02	FC Nova White G99	1	PVSC United Adrenaline G99	2	FC Nova Fall Showcase U13/U14G King U14	2.5	1.17
14451	2013-10-12	PVSC United Adrenaline G99	3	Soccer Xpress Atomic Black G99	1	Idaho D3 Division 1 U14	2.2	1.91
14452	2013-10-12	FC Nova White G99	4	PVSC United Adrenaline G99	0	Idaho D3 Division 1 U14	2.5	1.17
14371	2013-10-06	FC Nova White G99	5	PVSC United Adrenaline G99	0	GEM State Challenge U14G Gold U14	2.5	1.17
14372	2013-10-06	PVSC United Adrenaline G99	1	Idaho Rush Nike G99	3	GEM State Challenge U14G Gold U14	1.3	2.51
14240	2013-10-05	Boise Nationals Velocity G99	1	PVSC United Adrenaline G99	2	GEM State Challenge U14G Gold U14	1.1	1.84
14243	2013-10-05	FC Nova Pink G00	2	PVSC United Adrenaline G99	1	GEM State Challenge U14G Gold U14	3.7	0.85
13577	2013-09-14	Idaho Rush Nike G99	1	PVSC United Adrenaline G99	1	Idaho D3 Division 1 U14	2.5	1.31
13578	2013-09-14	PVSC United Adrenaline G99	1	Soccer Xpress Atomic Orange G99	6	Idaho D3 Division 1 U14	1.5	2.57
13364	2013-09-07	Boise Nationals G99	2	PVSC United Adrenaline G99	2	Idaho D3 Division 1 U14	2.8	0.88
13365	2013-09-07	PVSC United Adrenaline G99	1	FC Nova Pink G99	7	Idaho D3 Division 1 U14	1.0	5.61